

BIJNI COLLEGE OF ARTS AND SCIENCE

BIJNI COLLEGE, BIJNI, CHIRANG DISTRICT

ASSAM, INDIA

783390

www.bjnicollege.ac.in

STAKEHOLDERS FEEDBACK ANALYSIS REPORT (2019-2020)



Submitted To

INTERNAL QUALITY ASSURANCE CELL (IQAC)

BIJNI COLLEGE, BIJNI

Email: iqacbijnicollege@gmail.com

**STAKEHOLDERS FEEDBACK ANALYSIS REPORT
(2019-2020)**

INTRODUCTION

Internal Quality Assurance Cell (IQAC) makes it a tradition to mandatorily collect feedback from stakeholders- students, teachers, employers and alumni. This is done by the Student/ Stakeholder's feedback cell. They collect and analyze the feedback received and make suggestions to appropriate bodies so as to imitate the action for improvement. Feedback is collected from students, teachers and alumni through manually.

ABOUT THE COLLEGE

Bijni College is one of the premier colleges situated in BTAD, Assam, India established in 1969. The college is affiliated to Gauhati University with 14 departments at UG (Science & Arts) and 1 PG department. It is accredited B⁺ by NAAC.

STAKEHOLDERS

- Feedback from Students about teaching and learning, Laboratory, Infrastructural facilities, Library, Hostel facilities.
- Feedback from Teachers about Curriculum, Infrastructural facilities, Library and Research facilities.
- Feedback from Alumni.

BIJNI COLLEGE OF ARTS AND SCIENCE

BIJNI COLLEGE, BIJNI, CHIRANG DISTRICT

ASSAM, INDIA

783390

www.bijnicollege.ac.in

**STUDENTS FEEDBACK ANALYSIS REPORT
(2019-2020)**

Submitted To

INTERNAL QUALITY ASSURANCE CELL (IQAC)

BIJNI COLLEGE, BIJNI

Email: iqacbijnicollege@gmail.com

Chapter: 2

STUDENTS FEEDBACK

No. of responses: 160

| % FEEDBACK ANALYSIS (2019-2020) | | | | | | |
|--|---|------------------|------------------|-------------|----------------|-------------------------|
| Sl No | Parameters | Excellent | Very Good | Good | Average | Need Improvement |
| [1] | Syllabi has applicability/ relevance to Current Global scenarios. | 4 | 45 | 35 | 8 | 8 |
| [2] | Teacher covers the entire syllabus in Time. | 4 | 35 | 41 | 15 | 5 |
| [3] | Online class facilities. | 5 | 30 | 40 | 20 | 5 |
| [4] | Classrooms are clean and well Maintained. | --- | 2 | 18 | 50 | 30 |
| [5] | Teacher conducts tests or assignments or Quizzes or seminars or presentations in The class. | ----- | 15 | 40 | 30 | 15 |
| [6] | Hostel facilities (Boys' and Girls'). | 3 | 14 | 25 | 40 | 18 |
| [7] | Equipment in the laboratories is good Working condition. | 2 | 3 | 40 | 27 | 28 |
| [8] | Computer, internet and wifi facilities. | ----- | 15 | 30 | 30 | 25 |
| [9] | Toilets/ washrooms are clean and Properly maintained. | 2 | 27 | 36 | 20 | 15 |
| [10] | Library facilities. | 3 | 10 | 60 | 20 | 7 |

IQAC Coordinator

Principa


Co-Ordinator
IQAC
Biini College, Bijni


Principal
Biini College, Biini

- [1] Syllabi has applicability/ relevance to Current Global scenarios. Excellent 4%; Very Good 45%; Good 35%; Average 8% and Need Improvement 8%.
- [2] Teacher covers the entire syllabus in Time. Excellent 4%; Very Good 35%; Good 41%; Average 15% and Need Improvement 5%.
- [3] Online class facilities. Excellent 5%; Very Good 30%; Good 40%; Average 20% and Need Improvement 5%.
- [4] Classrooms are clean and well maintained. Excellent Nil; Very Good 2%; Good 18%; Average 50% and Need Improvement 30%.

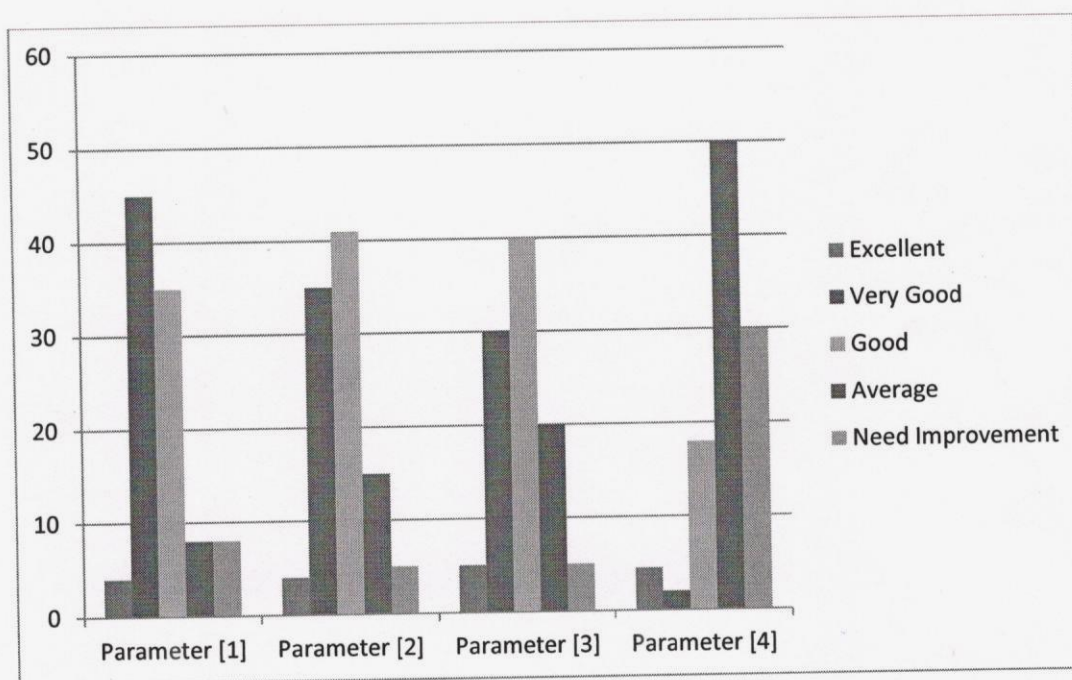


Figure 1: Students feedback analysis (2019-2020).


Co-Ordinator
IQAC
Bijni College, Bijni


Principal
Bijni College, Bijni

[5] Teacher conducts tests or assignments or Quizzes or seminars or presentations in the class. Excellent Nil; Very Good 15%; Good 40%; Average 30% and Need Improve 15%.

[6] Hostel facilities (Boys' and Girls'). Excellent 3%; Very Good 14%; Good 25%; Average 40% and Need Improved 18%.

[7] Equipment in the laboratories is good Working condition. Excellent 2%; Very Good 3%; Good 40%; Average 27% and Need Improved 28%.

[8] Computer, internet and wifi facilities. Excellent Nil; Very Good 15%; Good 30%; Average 30% and Need Improved 25%.

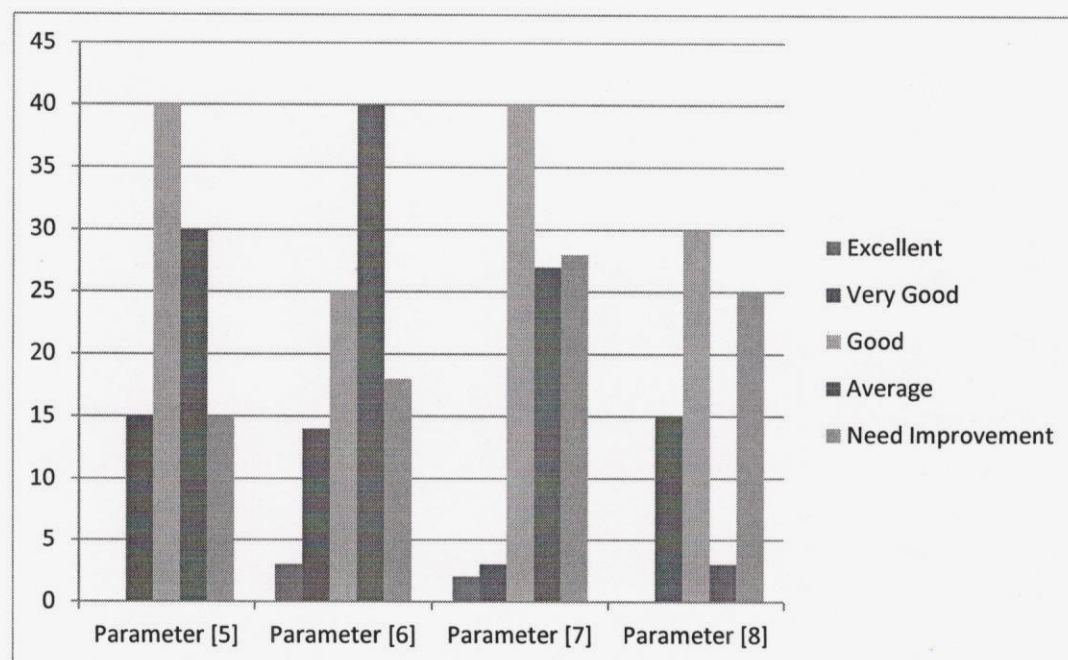


Figure 2: Students feedback analysis (2019-2020).


 Co-Ordinator
 IQAC
 Bijni College, Bijni


 Principal
 Bijni College, Bijni

[9] Toilets/ washrooms are clean and properly maintained. Excellent 2%; Very Good 27%; Good 36%; Average 20% and Need Improved 15%.

[10] Library facilities. Excellent 3%; Very Good 10%; Good 60%; Average 20% and Need Improved 7%.

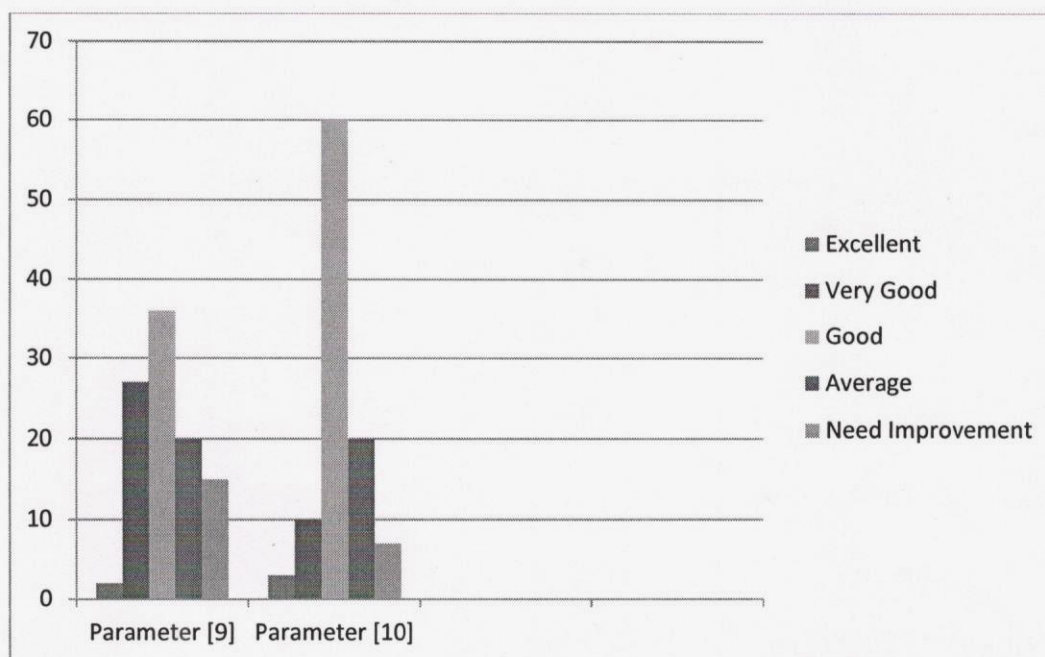


Figure 3: Students feedback analysis (2019-2020).


 Co-Ordinator
 IQAC
 Bijni College, Bijni


 Principal
 Bijni College, Bijni

BIJNI COLLEGE OF ARTS AND SCIENCE

BIJNI COLLEGE, BIJNI, CHIRANG DISTRICT

ASSAM, INDIA

783390

www.bjnicollege.ac.in**TEACHERS FEEDBACK ANALYSIS REPORT
(2019-2020)**

Submitted To

INTERNAL QUALITY ASSURANCE CELL (IQAC)

BIJNI COLLEGE, BIJNI


Email: iqacbjnicollege@gmail.com

Chapter: 3

TEACHERS FEEDBACK

No. of responses: 30

| % FEEDBACK ANALYSIS (2019-2020) | | | | | | |
|---------------------------------|---|-----------|------|------|--------------|----------------|
| Sl No | Parameters | Very Good | Good | Fair | Satisfactory | Unsatisfactory |
| [1] | Syllabi has applicability /relevance to current Global scenarios. | 15 | 25 | 10 | 43 | 7 |
| [2] | The course content is well supported by relevant reference and book materials | 8 | 27 | 9 | 40 | 16 |
| [3] | Content of the course fulfill the need of the stakeholders | 30 | 40 | 2 | 17 | 11 |
| [4] | Institute provides adequate for Project and research facilities. | 10 | 36 | 9 | 35 | 10 |
| [5] | General cleanliness of the college | 10 | 25 | 6 | 50 | 9 |


 IQAC Coordinator
 Co-Ordinator
 IQAC
 Bijni College, Bijni


 Principal
 Principal
 Bijni College, Bijni

Co-Ordinator
 IQAC
 Bijni College, Bijni

- [1] Syllabi has applicability /relevance to current Global scenarios. Very Good 15%; Good 25%; Fair 10%; Satisfactory 43% and Unsatisfactory 7%.
- [2] The course content is well supported by relevant reference and book materials. Very Good 8%; Good 27%; Fair 9%; Satisfactory 40% and Unsatisfactory 16%.
- [3] Content of the course fulfill the need of the stakeholders. Very Good 30%; Good 40%; Fair 2%; Satisfactory 17% and Unsatisfactory 11%.
- [4] Institute provides adequate for Project and research facilities. Very Good 10%; Good 36%; Fair 9%; Satisfactory 35% and Unsatisfactory 10%.
- [5] General cleanliness of the college. Very Good 10%; Good 25%; Fair 6%; Satisfactory 50%; Unsatisfactory 9%.

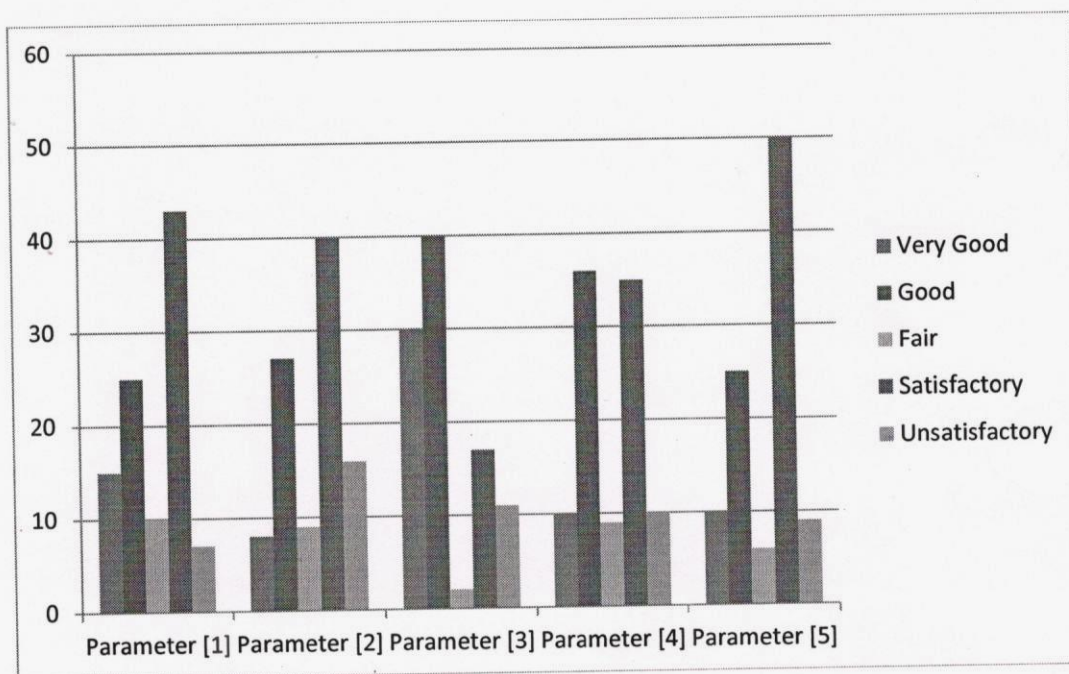



Figure 4: Teachers feedback analysis (2019-2020)


 Co-Ordinator
 IQAC
 Bijni College, Bijni


 Principal
 Bijni College, Bijni

BIJNI COLLEGE OF ARTS AND SCIENCE

BIJNI COLLEGE, BIJNI, CHIRANG DISTRICT

ASSAM, INDIA

783390

www.bjnicollege.ac.in

**ALUMNI FEEDBACK ANALYSIS REPORT
(2019-2020)**

Submitted To

INTERNAL QUALITY ASSURANCE CELL (IQAC)

BIJNI COLLEGE, BIJNI

Email: iqacbijnicollege@gmail.com

Chapter: 4

ALUMINI FEEDBACK

No. of responses: 70

| % FEEDBACK ANALYSIS (2019-2020) | | | |
|---------------------------------|--|-----|----|
| Sl No | Parameters | Yes | No |
| [1] | Have you seen any change in the college since Passing out? | 80 | 20 |
| [2] | Has there been positive change since last NAAC reaccreditation? | 82 | 18 |
| [3] | Did you feel that hospitality of institute after passing was nice? | 70 | 30 |
| [4] | Are you satisfied with the present Functioning of the college? | 75 | 25 |
| [5] | Did you feel that the college campus was clean? | 70 | 30 |


IQAC Coordinator
Co-Ordinator
IQAC
Bijni College, Bijni


Principal
Principal
Bijni College, Bijni

- [1] Have you seen any change in the college since passing out? Responses (%) Yes 80 and No 20
- [2] Has there been positive change since last NAAC reaccreditation? Responses (%) Yes 82 and No 18
- [3] Did you feel that hospitality of institute after passing was nice? Responses (%) Yes 70 and No 30
- [4] Are you satisfied with the present Functioning of the college? Responses (%) Yes 75 and No 25
- [5] Did you feel that the college campus was clean? Responses (%) Yes 70 No 30

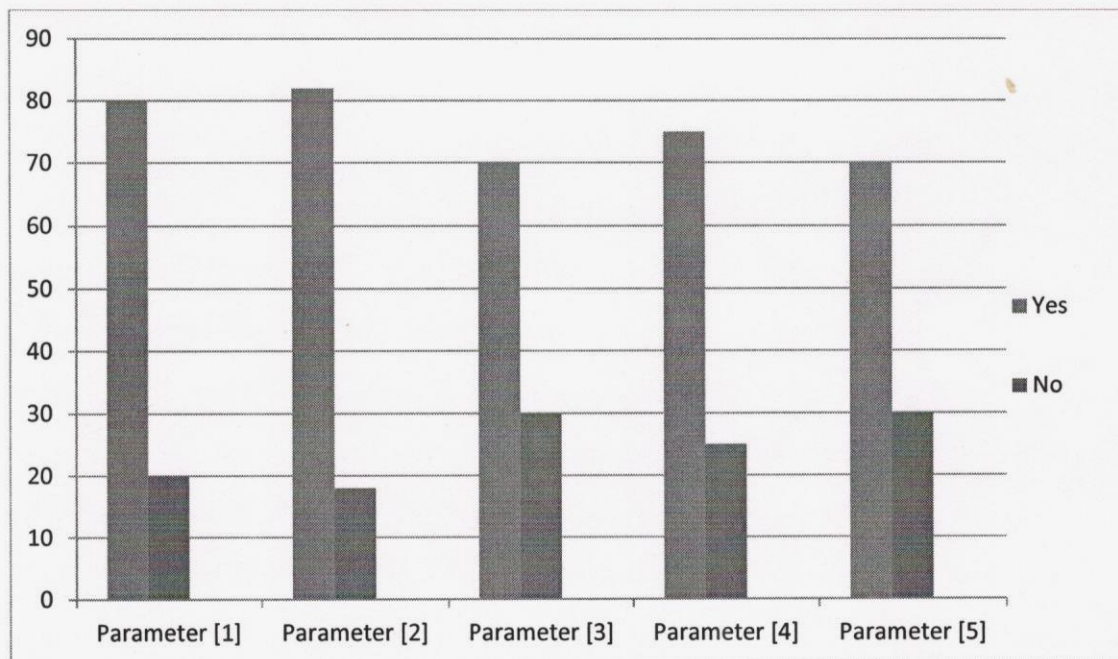


Figure 6: Alumni feedback analysis (2019-2020)


 Co-Ordinator
 IOAC
 Bijni College, Bijni


 Principal
 Bijni College, Bijni

BIJNI COLLEGE:BIJNI

ESTD: 1969

BIjni, Chirang (BTAD), Assam, India

STUDENT FEEDBACK FORM

Select any option

Dear Students,

Feedback from students is very crucial for improving the working of the college, and hence we request you to fill this form to the best of your knowledge.

Name of the course/ Department: -----
Semester and Year:-----
Name Student:-----
Students Roll Number:-----
Mobile Number:-----
Email Id:-----

Please Tick the appropriate box of your response:

[E] Excellent [VG] Very Good [G] Good
[A] Average [NI] Need Improvement

| Parameters | E | VG | G | A | NI |
|---|---|----|---|---|----|
| [1] Syllabi has applicability/ relevance to Current Global scenarios. | | | | | |
| [2] Teacher covers the entire syllabus in Time. | | | | | |
| [3] Online class facilities. | | | | | |
| [4] Classrooms are clean and well Maintained. | | | | | |
| [5] Teacher conducts tests or assignments or Quizzes or seminars or presentations in the class. | | | | | |
| [6] Classrooms are clean and we Maintained. | | | | | |
| [7] Equipment in the laboratories is in good Working condition. | | | | | |
| [8] Computer, internet and wifi facilities. | | | | | |
| [9] Toilets/ washrooms are clean and Properly maintained. | | | | | |
| [10] Library facilities. | | | | | |

Date:

Signature of student

BIJNI COLLEGE: BIJNI
INTERNAL QUALITY ASSURANCE CELL

TEACHERS FEEDBACK FORM

Faculty:-----

Department:-----

Name of the Faculty Member:-----

You are requested to give your frank opinion by ticking the appropriate choice:

- [E] Excellent, [VG] Very Good, [G] Good
[A] Average, [NI] Need Improvement

| Parameters | E | VG | G | A | NI |
|--|----------|-----------|----------|----------|-----------|
| [1] Content of the course fulfill the Need of the stakeholders. | | | | | |
| [2] The course content is well supported by relevant reference and book materials. | | | | | |
| [3] Syllabi has applicability /relevance to current Global Scenarios. | | | | | |
| [4] Institute provides adequate for Project and research facilities. | | | | | |
| [5] General cleanliness of the college | | | | | |

Date:

Signature of Faculty

BIJNI COLLEGE: BIJNI
INTERNAL QUALITY ASSURANCE CELL

ALUMINI FEEDBACK FORM

Name:-----
Address:-----
Year of passing:-----
Degree studied:-----
Mobile Number:-----

Please touch the appropriate box of your response

| Parameters | Yes | No |
|--|-----|----|
| [1] Have you seen any change in the college since Passing out? | | |
| [2] Has there been positive change since last NAAC Reaccreditation? | | |
| [3] Did you feel that hospitality of institute after passing Was nice? | | |
| [4] Are you satisfied with the present Functioning of the College? | | |
| [5] Did you feel that the college campus was clean? | | |

Date:

Signature of alumnus